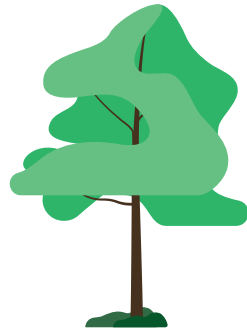
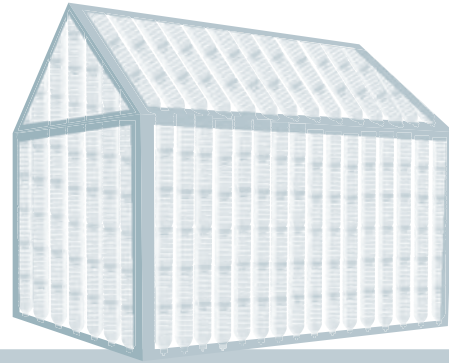




Build a bottle greenhouse



In this activity, you'll use plastic bottles to create the walls and roof of a greenhouse. The size and shape is up to you.

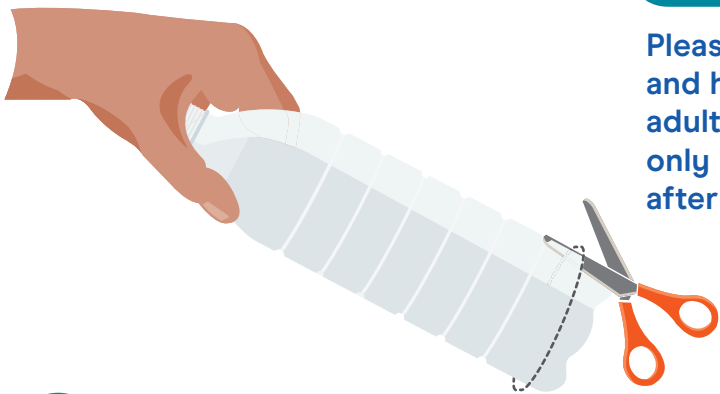
1 Start by cleaning all the bottles. Soak them to remove the labels, and take the caps off and recycle them. Use scissors to cut off the bottoms so you are left with plastic tubes.

Resources:

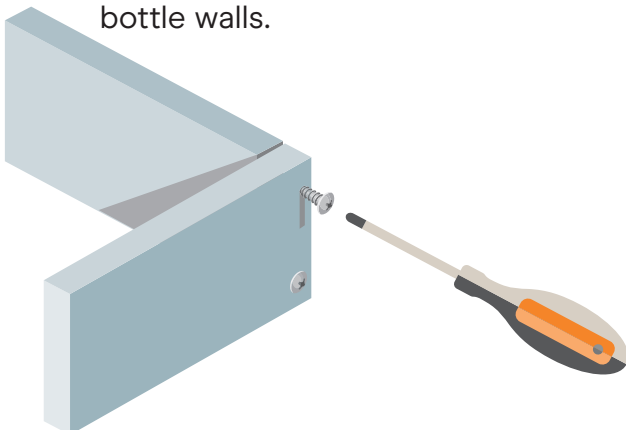
- Scissors
- Screwdriver
- Hammer
- Plastic bottles
- Bamboo canes
- Wood screws and screwdrivers
- Nails
- Hand saws
- Bubble wrap
- Hinges (optional – your structure may not have a door)
- Wood (choose a softwood like pine or cedar that's easier to cut – consider using recycled wood to keep costs down and make it more environmentally friendly)

Individual or group activity

Please note, this activity requires the use of scissors and hand tools. Please ensure that a responsible adult is supervising / aware of what you are doing, only use tools you are comfortable with and look after your own safety at all times.

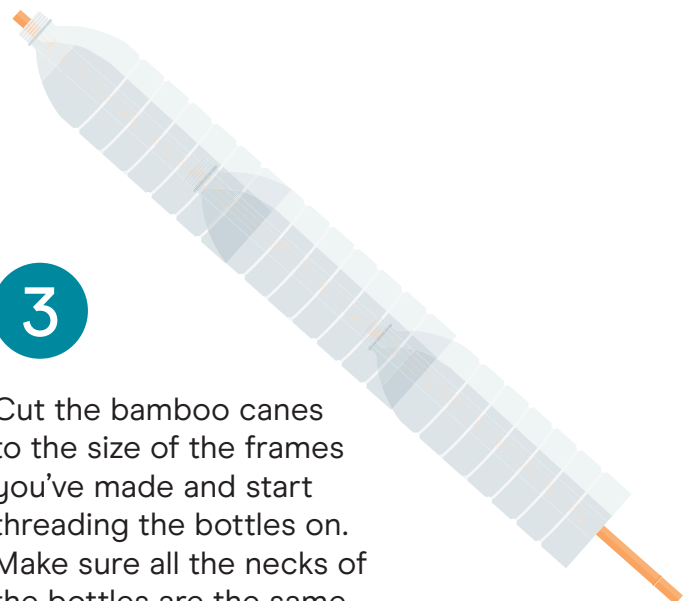


2 Plan the size of your greenhouse and screw together wooden frames that will support the plastic bottle walls.



3

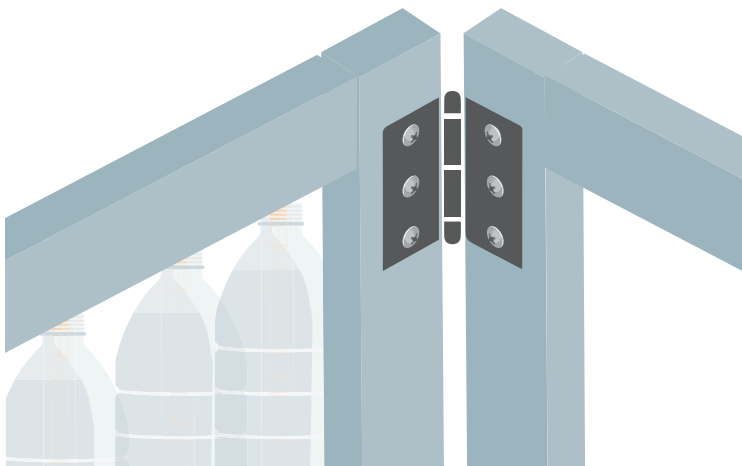
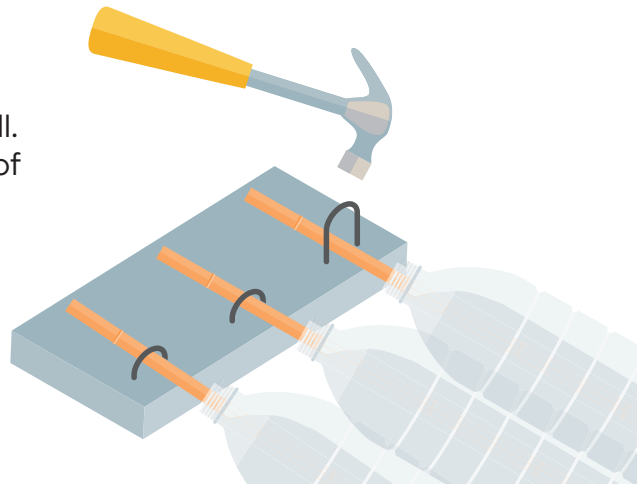
Cut the bamboo canes to the size of the frames you've made and start threading the bottles on. Make sure all the necks of the bottles are the same way up.





4

Nail the canes to the frames until you have a complete wall. Create panels to form the roof in the same way.



5

If your greenhouse is big enough to stand up in, create a door by fixing hinges to one of the frames. Make your door a bit smaller than the inside of the frame so that it will open and close even if it swells in the rain.

6

If you find there are lots of gaps between the walls of your greenhouse, insulate the inside with bubble wrap to keep it warm.

