

Where does the water come from?

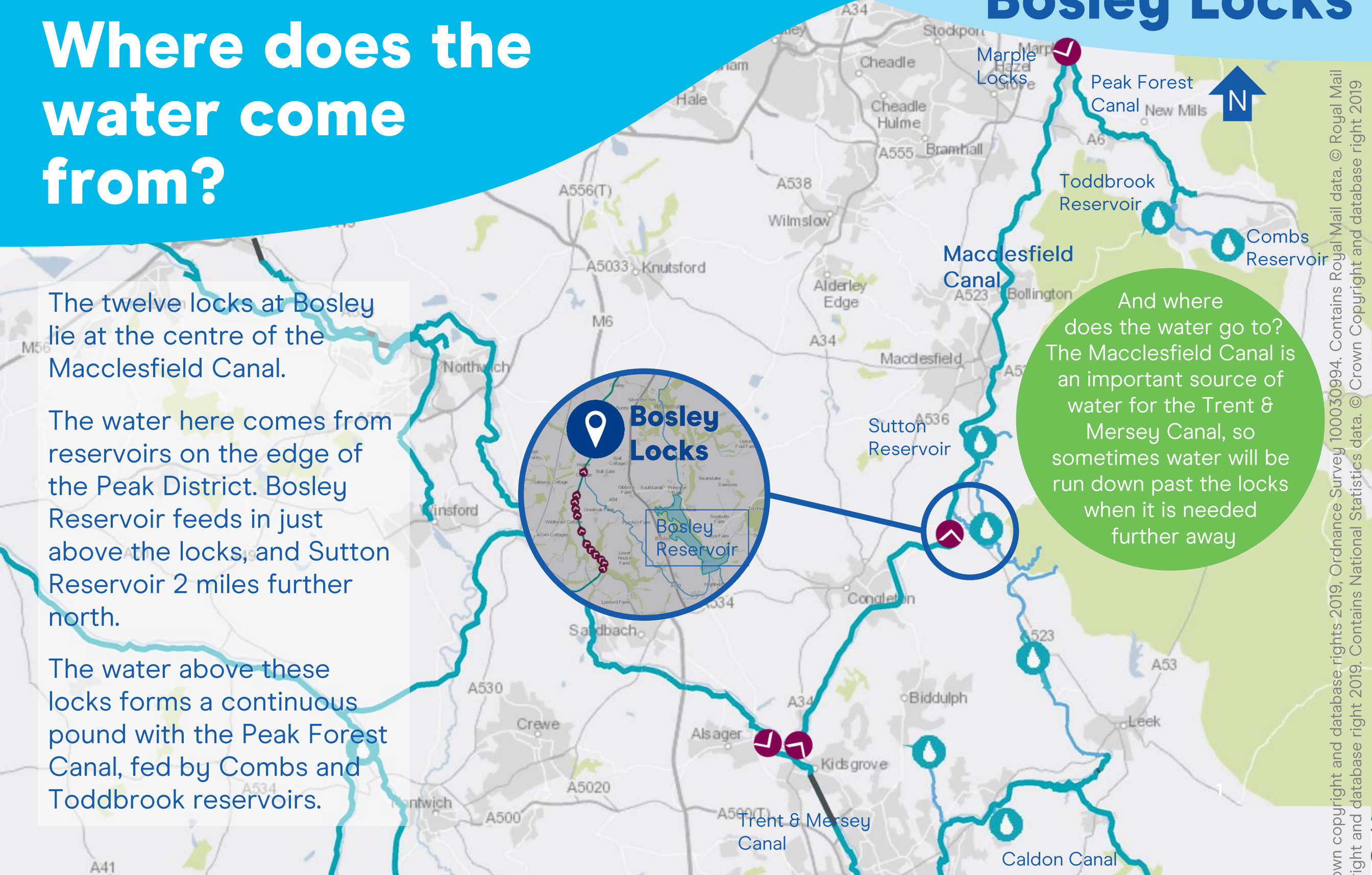
Bosley Locks

The twelve locks at Bosley lie at the centre of the Macclesfield Canal.

The water here comes from reservoirs on the edge of the Peak District. Bosley Reservoir feeds in just above the locks, and Sutton Reservoir 2 miles further north.

The water above these locks forms a continuous pound with the Peak Forest Canal, fed by Combs and Toddbrook reservoirs.

And where does the water go to? The Macclesfield Canal is an important source of water for the Trent & Mersey Canal, so sometimes water will be run down past the locks when it is needed further away



For other locations go to canalrivertrust.org.uk/water-sources