

Anderton Boat Lift Inspector's Trail River Weaver and Trent & Mersey Canal



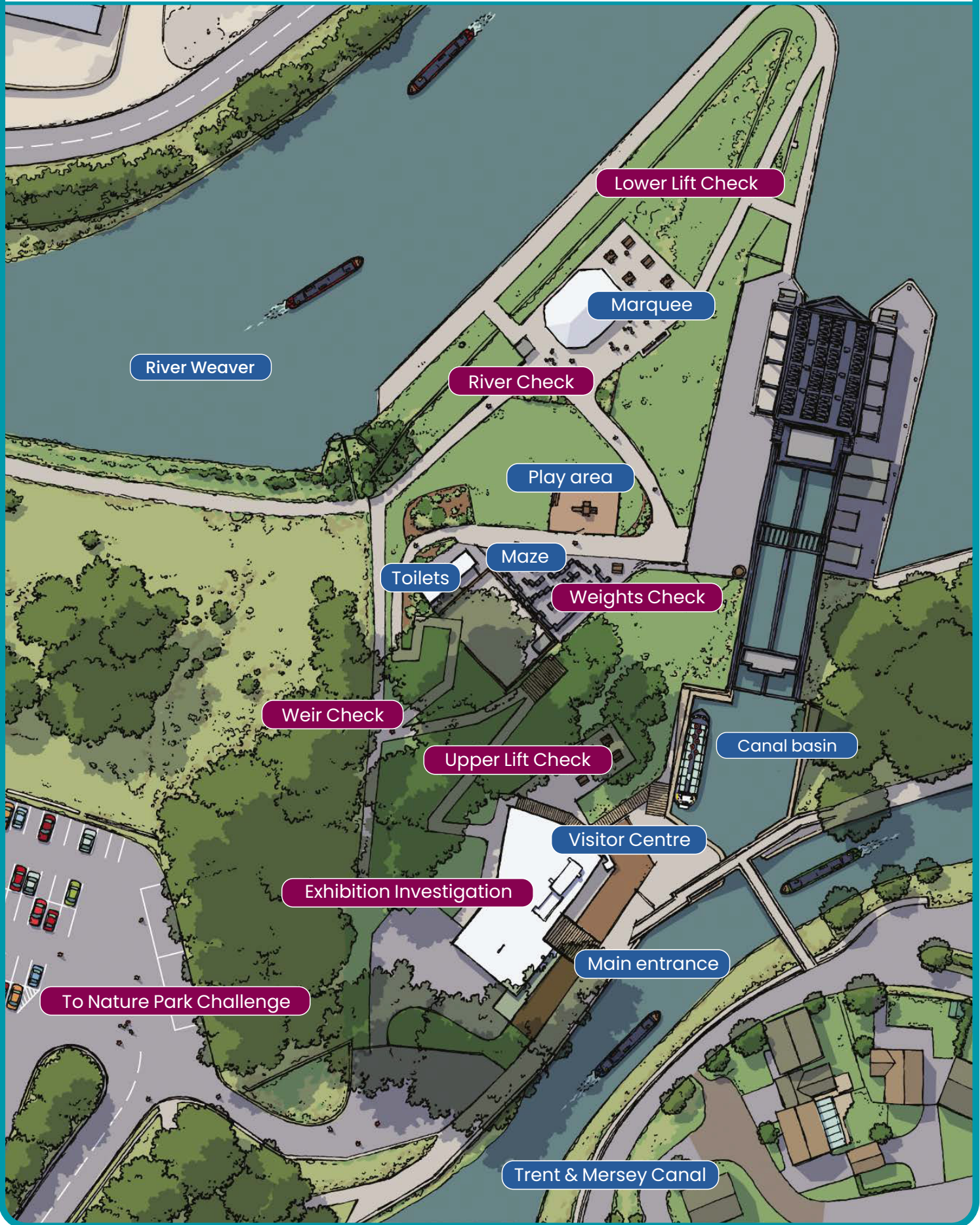
Congratulations
on your new
job as a lift
inspector!

You have been tasked with performing an inspection of the Anderton Boat Lift site to make sure it is ready for visitors and workers alike! Anderton is home to the world's first ever successful boat lift, but we need to make sure that it is just as effective today as it was over 100 years ago.

There are many checks that need to be done around the boat lift, this trail will lead you around the site and help you ensure that everything is in order. Good luck with your task, inspector!

canalrivertrust.org.uk/explorers

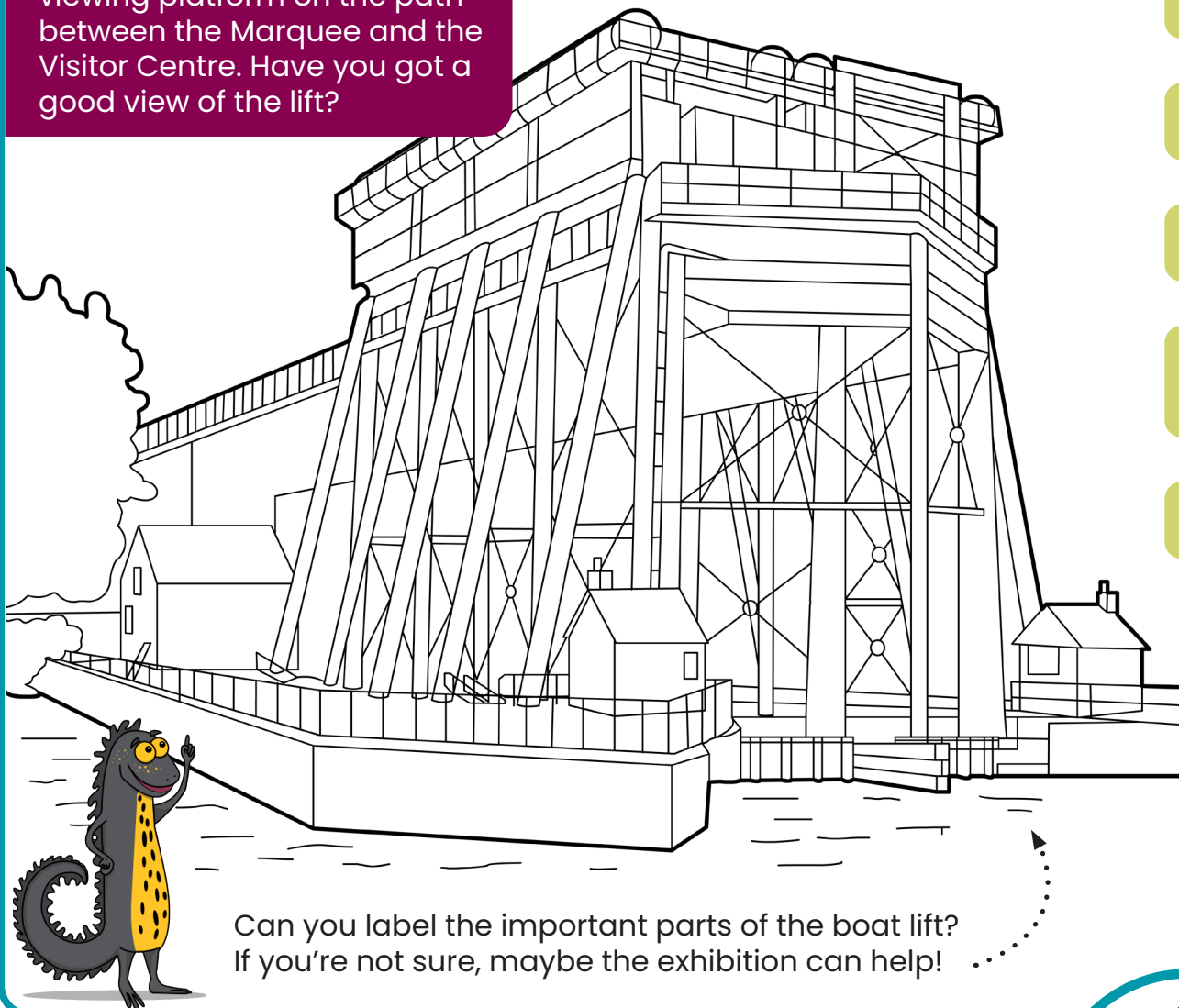
Map



2 Always remember to stay **SAFE** near water – Stay **AWAY** From the Edge.

Stop 1 - Upper Lift Check

Let's head to the wooden viewing platform on the path between the Marquee and the Visitor Centre. Have you got a good view of the lift?



- Canal Basin
- River Basin
- Caissons
- Hydraulic Pipes
- Gates

Can you label the important parts of the boat lift?
If you're not sure, maybe the exhibition can help!

Stop 2 - Spillway Check

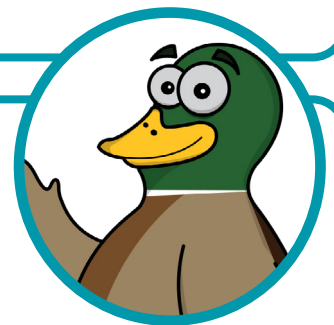
Make your way to the path at the edge of the site. Do you hear the water running from the canal down into the river?

Thinking activity:

This extra water is sent down to the river to stop the canal overflowing. Look out for any twigs or leaves trapped in the metal grates.

Why do you think we don't want objects spilling into the river?

.....
How fast is the water flowing today? The speed of the water flow can depend on the weather. **Can you guess why this is?**



Stop 3 - Weight Check

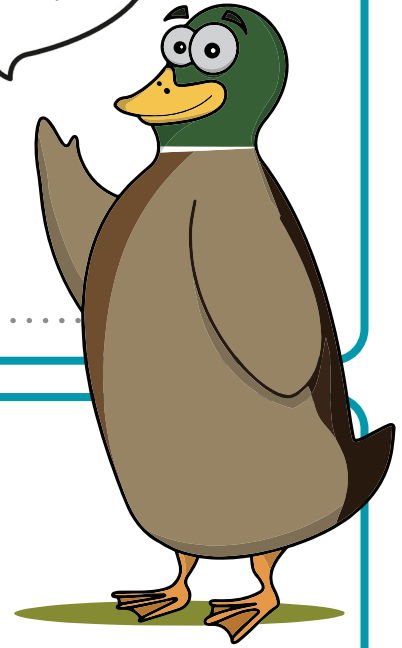
Have you seen the maze opposite our play area?
This maze is constructed from recycled weights that
used to be on the boat lift!

Let's see if you can find your way to the centre of the maze.

What's hidden in the middle?

.....

Get your
thinking caps
on!!



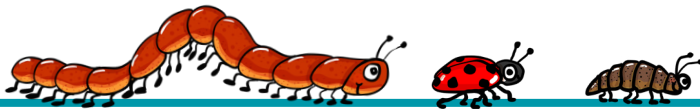
Stop 4 - River Check

The river needs to be at its best for the boats travelling through it,
but it must be safe for the wildlife living here too!

How busy is the river today? Are there many boats around?

Littering used to be a big problem on the river, but luckily there are lots of
people who care about keeping it clean today. Do you spot any rubbish or
waste in the water?

With lots of grass, trees and flowers around there are lots of animals
living near the river too! Do you see any here today?



Stop 5- Lower Lift Check

If you walk to the big patch of grass next to the Marquee you'll
get a great view of the bottom of the lift.

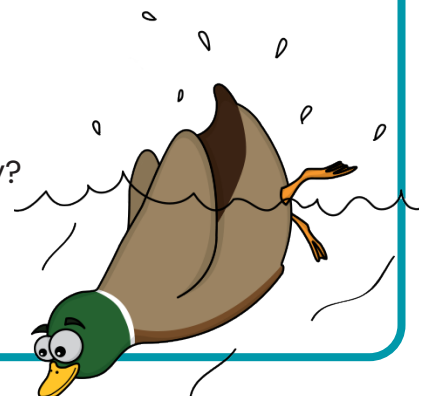
Can you hear anything from here? The water, boats and the lift
itself might be making some noises.

.....

Can you see any workers on or around the lift? What kind of jobs
do you think they are doing to make sure the lift is working safely?

.....

.....

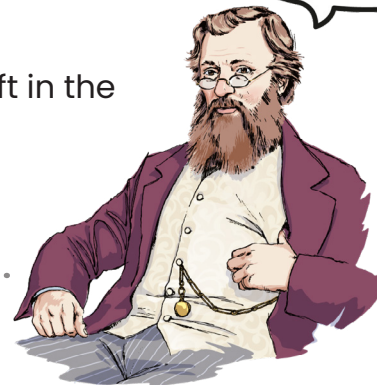


Stop 6 - Exhibition Investigation

Let's head into the visitor centre. Any inspector should know the history of their project!

You can use the videos and information panels all around the exhibition to find out lots of new things about the boat lift and the people who made it. Can you fill in the gaps?

I am Edwin Clark



Edwin Clark was the first engineer to design the boat lift in the year

He needed to find a way to transport boats from the Canal down to the River

What were the three options that could have been built to overcome the big hill?
.....

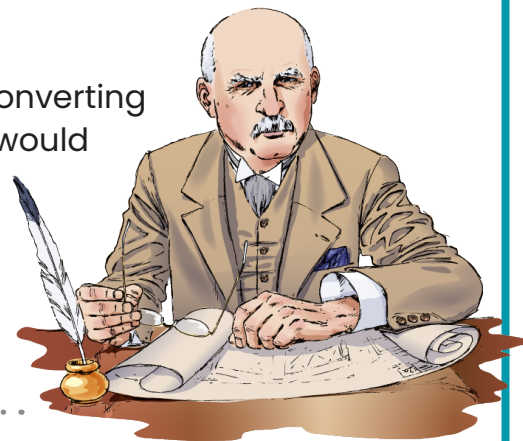
Edwin Clark decided a hydraulic boat lift was the best option!

I am Colonel J. A. Saner

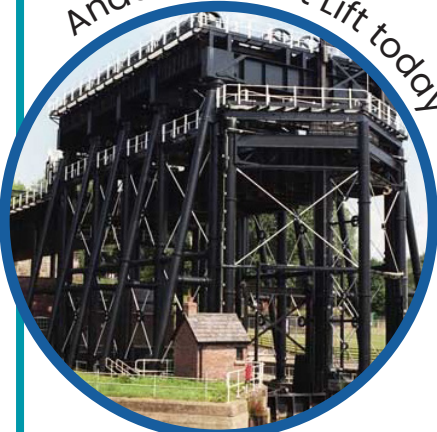
Colonel Saner's job was also as an who redesigned the boat lift in the year

In contrast to Edwin Clark's ideas, Saner decided that converting the lift from hydraulic power to power would be the best way forward. This is the main difference between the two!

However, electric power was not the best choice for the boat lift either. Why didn't it work?



Anderton Boat Lift today



Now the boat lift uses hydraulic power again, replacing water with in order to stop corrosion from breaking down the structure.

Now that we have modern roads, not many large cargo ships use the lift anymore. What do we use the lift for today?
.....

What else have you learned about the boat lift today?
.....

Stop 7 - Nature Park Challenge

Let's explore the grounds beyond the visitor centre.

Follow the pathway along the canal and across the car park (Carefully!) and you'll find the entrance to the Nature Park.

Two colourful dragonflies mark the pathway. . .

Look out for a map! Can you use the map to navigate your way back to the visitor centre along the river?

Down here you'll find lots of wildlife that love our green spaces rather than the water. Look out for squirrels!



Stop 8 - Dragonfly Pond

If you spot a track leading away from the main pathway, this will lead you to a dragonfly pond.

If you head through the gate, you should be lucky enough to spot lots of the dragonflies that live here. They can be many different shapes and sizes too!

There's a board full of fun facts about dragonflies, can you learn something new? Is there anything you know about dragonflies already?

.....
.....
.....
.....

